


**LEGEND:**

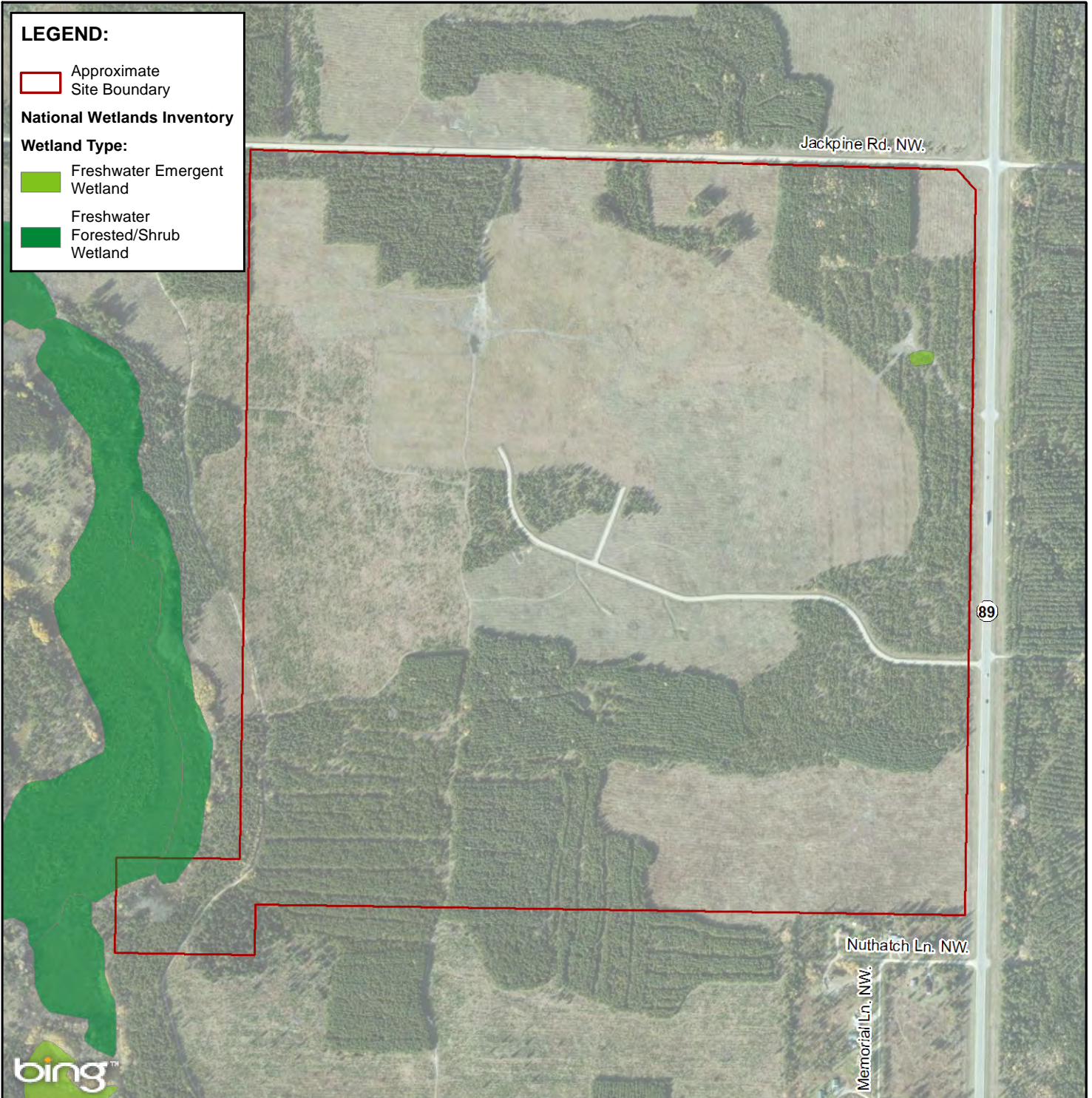
 Approximate Site Boundary

**National Wetlands Inventory**

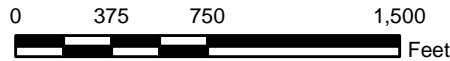
**Wetland Type:**


 Freshwater Emergent Wetland

 Freshwater Forested/Shrub Wetland



SOURCE: Aerial imagery Image courtesy of USGS © 2013 Microsoft Corporation  
 Wetland data obtained from U.S. Fish & Wildlife Service  
 National Wetlands Inventory :  
<http://wetlandsfws.er.usgs.gov/NWI/download.html>



<p><b>AMEC</b>                  7376 SW Durham Road                  Portland, OR, U.S.A. 97224</p>				<p>CLIENT:  <b>NORTHLAND REGIONAL                  SPORTS PARK</b></p>	
<p>TITLE: <b>SITE PLAN</b></p>		<p>DWN BY: SD</p>	<p>DATUM: NAD83</p>	<p>DATE: NOVEMBER 2012</p>	
<p>PROJECT: <b>ENVIRONMENTAL STEWARDSHIP PLAN                  STATE HIGHWAY 89 &amp; JACKPINE ROAD NW.                  BEMIDJI, MINNESOTA</b></p>		<p>CHK'D BY: MT</p>	<p>REV. NO.: -</p>	<p>PROJECT NO.: 13PROPINDC.****</p>	
		<p>PROJECTION: MN SP N. Ft.</p>	<p>SCALE: 1 inch = 750 feet</p>	<p>FIGURE No.: <b>FIGURE 2</b></p>	